

IEEE RFID 2012

6th Annual IEEE International Conference on RFID

Walt Disney World Swan & Dolphin Resort
Orlando, Florida (USA)
April 3-5, 2012
www.ieee-rfid.org/2012

REGISTER NOW!
Early registration ends March 2nd



CALL FOR PARTICIPATION

TECHNICAL PROGRAM

Technical Paper Sessions Wednesday/Thursday, April 4/5

Learn about the latest cutting-edge research in RFID technologies and talk to speakers from leading research organizations such as Georgia Tech, Intermec, Keio University, Duke University, and Cambridge University in seven tremendous sessions:

- Antennas and Propagation
- Circuits, Devices & Interrogators
- Security and Privacy
- Applications and Software
- Communication Protocols
- Sensors
- Localization

Poster & Demo Session

Wednesday, April 4 @ 15:00 - 17:00

Witness and discuss state of the art, ongoing research from current researchers, engineers, and scientists. The topics for 22 posters span:

- Studies of RFID usage in industry applications
- Improved antenna designs
- New range estimation techniques
- Experimental methods for RFID

KEYNOTE ADDRESS Wednesday, April 4 @ 8:30 a.m.



Ramin Sadr, CEO, Mojix
Passive RFID: Present and Future Directions

STUDENT COMPETITION



Rectenna Shootout!

Student teams of any size may submit a design for a custom 915 MHz LED rectenna (antenna + RF charge pump + LED) for the IEEE RFID 2012 conference. Prize for the device that lights an LED at the greatest distance from a 915MHz continuous wave source. For further information, email Greg Durgin at durgin@gatech.edu.

TUTORIALS



Advanced UHF RFID Tag Antenna Design

Tuesday, April 3: 8:30 am – 12:00 pm

Presenters: *Gaetano Marrocco (University of Roma Tor Vergata)*

Join Gaetano Marrocco, an expert in antenna design and author of several publications in antenna design and theory, as he demystifies the art of antenna design. Starting from the basics of antenna theory this workshop will provide you with the tools to design your custom antenna of choice.



RFID Technical Tutorial

Tuesday, April 3: 8:30 am – 12:00 pm

Organizer: *Dale R. Thompson (University of Arkansas)*

An RFID system is a cohesive interplay of tags and readers, middleware and applications. Dale Thompson, from the University of Arkansas, provides a comprehensive overview in this tutorial targeted towards users considering RFID implementation.

IEEE Social Events

- Reception – Tuesday, April 3rd – 8:30 pm at The Dolphin
- Networking Dinner – Wednesday, April 4th – 6:30 pm at Big River Grille on Disney's Boardwalk

WORKSHOPS



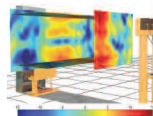
RFID and Sensing

Tuesday, April 3: 1:30 – 4:30 pm

Organizers: *Rahul Bhattacharyya (MIT), Radislav A. Potyrailo (GE Global Research), Pavel Nikitin (Intermec), Rich Fletcher (TagSense)*

Topics Included:

Looking beyond Identification: Join our panel of researchers and industry experts as they present their diverse approaches to RFID-based sensing. Learn how the RFID tag's antenna can be adapted as a sensor, how RFID can efficiently serve as a front end to sensor electronics and the scope of multidisciplinary research in material science and RF for innovative sensor design.



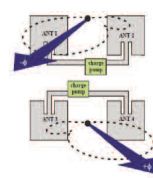
RFID Emulators and Simulators

Tuesday, April 3: 1:30 – 4:30 pm

Organizers: *Jin Mitsugi (Keio University), Alanson Sample (University of Washington), Christian Floerkemeier (MIT)*

Topics Included:

Join our panel of researchers as they present the state of the art in RFID emulation and simulation tools. Find out about Intel Research's WISP platform, simulation tools that help you model the RFID environment, and open source RFID software frameworks for application development.



5.8 GHz for RFID and Sensors

Tuesday, April 3: 1:30 – 4:30 pm

Organizer: *Gregory D. Durgin (Georgia Tech)*

Topics Included:

5.8 GHz might be the future of RFID. This workshop addresses the advantages and challenges to using the 5.8 GHz band for RFID and sensing and provides the advantages and open challenges at this frequency of operation.

REGISTER NOW!

<http://2012.ieee-rfid.org/registration/>